

THE GUT TERRAIN RESET PROTOCOL



A Practitioner-Created Guide to Strengthen
Digestion, Restore Immunity, and Prepare for
Parasite & Fungal Clearing

Angela Pifer
FUNCTIONAL MEDICINE NUTRITIONIST

Introduction

Welcome- This Is Where Real Healing Begins

If you're reading this, chances are you've tried things before.

Maybe you've.....

- Done a parasite cleanse or taken antimicrobials for SIBO.
- Cut out gluten, dairy, or high-FODMAP foods.

Maybe you've gotten temporary relief — only to have symptoms creep back in.

If that sounds familiar, I want you to hear this:

You did not fail the protocol. The protocol failed your terrain.

Most gut protocols focus on what to kill or what to remove — bacteria, yeast, parasites, food triggers. But the truth is, pathogens often come back not because you didn't treat them, but because your gut terrain wasn't strong enough to clear them out and keep them out.

That's where this guide comes in.

The Gut Terrain Reset Protocol is the missing step between knowing something is wrong... and knowing what to do next. It's what I teach in my clinical practice when someone comes to me after doing recurrent treatments with little to no improvements.

This protocol gives you the tools to:

- Calm inflammation before you provoke it
- Strengthen digestive and immune defenses
- Prepare your body for effective cleansing (if needed)
- Build resilience in your gut — even if you've had chronic symptoms for years

You'll also learn the signs that your terrain is off, how to track improvements, and what to do when you're ready to go deeper.

This is the foundation. Whether you're prepping for a parasite protocol, recovering from burnout, or simply want to feel clear and energized again — you start here.

Let's rebuild your inner ecosystem — from the ground up.

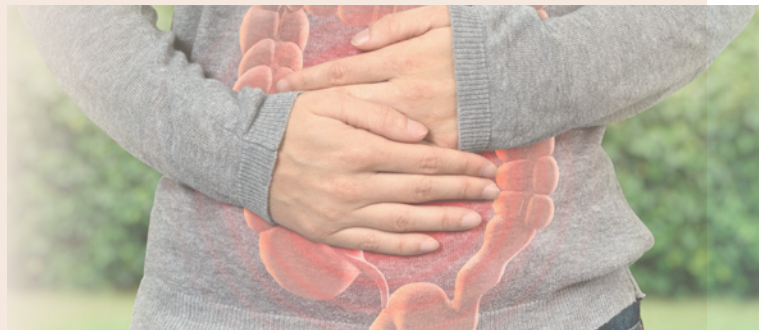
Angela Pifer

Angela Pifer, FMN, LN, CN “SIBO Guru”
Founder, Functional Medicine Shop
www.SIBOGuru.com
www.FunctionalMedicineShop.com



 [@SIBO.guru](https://www.instagram.com/SIBO.guru)

Meet Sarah



Let's meet Sarah, a 34-year-old woman who came to me with:

- Bloating that worsened around the full moon
- Food sensitivities to garlic, onions, and eggs
- Brain fog, night sweats, and sugar cravings
- Multiple stool tests showing no “red flags”
- Prior use of herbal antimicrobials for suspected SIBO and Candida

She'd tried everything — but nothing stuck. Instead of another pathogen protocol, we focused on:

- Nervous system regulation (daily castor oil packs + vagus oil)
- Gentle bitters + bile flow support
- GI lining nutrients (L-glutamine, zinc carnosine, marshmallow root)
- Gentle bowel support (magnesium + hydration)

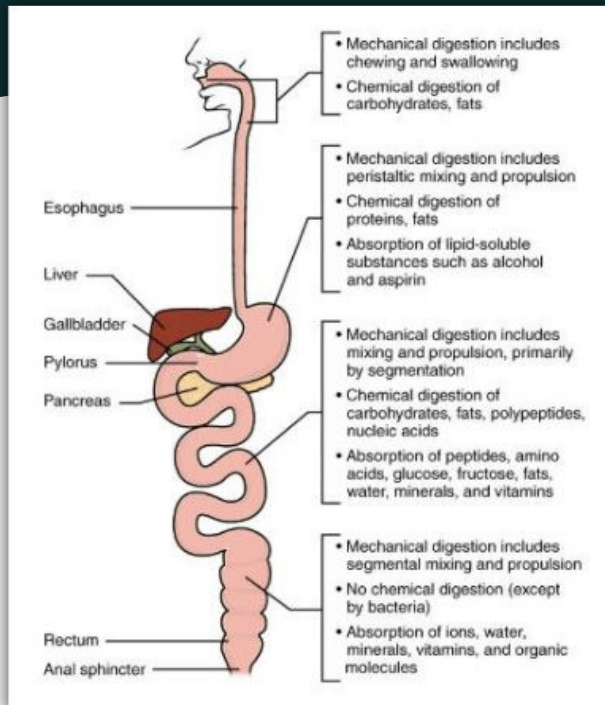
Within 4 weeks, her bloating was reduced by 60%, sleep improved, and her food tolerance started expanding. By week 6, she passed visible parasites — despite no prior positive stool test.

“The biggest shift,” she told me, “was that I felt safe in my body again.”

This is the power of terrain-first work.



What Is Gut Terrain?



You've probably heard the phrase "treat the root cause" before. But what if the root isn't a microbe... but a landscape? In functional medicine, we talk about gut "terrain" to describe the internal environment that keeps your digestive and immune systems in balance. This includes not just your microbiome (the bacteria living inside you), but also:

- How strong your stomach acid is
- How well your bile flows
- How resilient your mucosal lining is
- How effectively you move waste out
- Whether your nervous system is stuck in stress mode
- And whether your immune defenses are overwhelmed or underpowered

When your terrain is strong, you can handle microbial exposures — from food, pets, travel, or stress — without falling apart. When your terrain is weak, opportunistic organisms take hold: parasites, Candida, SIBO, mold, viruses, even histamine overload. And you don't need a stool test to know it.

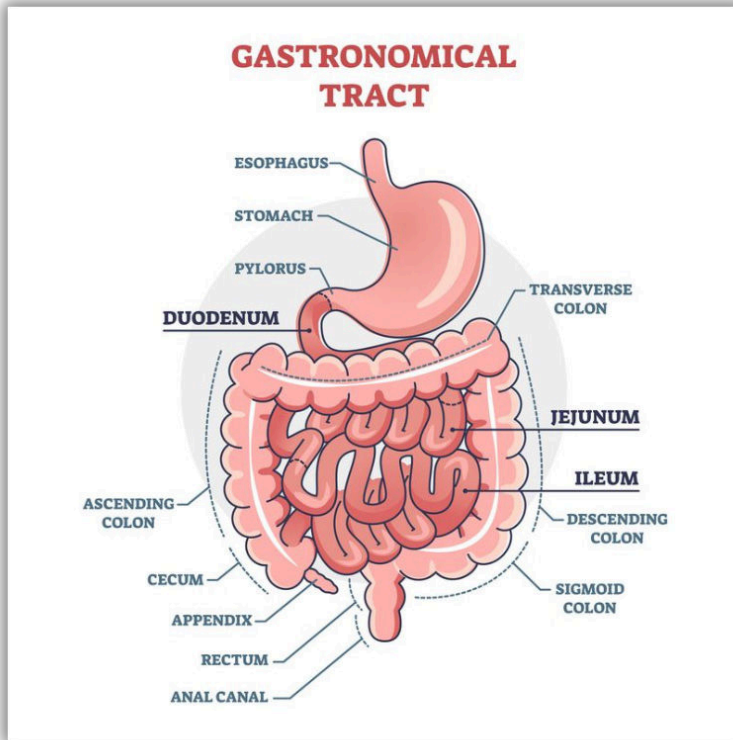


What Is Gut Terrain?

Pillar	What It Does	Signs It's Off
Stomach Acid (HCl)	Kills incoming pathogens, breaks down protein	Burping, bloating, reflux, early satiety
Bile Flow	Antimicrobial, fat digestion, hormone detox	Floating stool, nausea, acne, hormone swings
Enzymes	Breakdown of carbs, fats, and proteins	Undigested food, gas, heaviness after meals
Motility	Sweeps bacteria + waste through small intestine	Constipation, bloating, SIBO recurrence
Mucosal Immunity	Protects lining, regulates immune response	Histamine issues, multiple sensitivities
Drainage Pathways	Removes waste through liver, lymph, colon, kidneys	Puffy face, skin issues, headaches, fatigue

These systems work together like an ecosystem. When one is off, the others compensate — until they can't. That's when symptoms appear.

How Terrain Determines Outcomes



Let's say you eat sushi or handle raw produce. Maybe you drink tap water or have a pet that licks your face. Most people can clear low-level microbial exposures without even knowing it happened. But if your stomach acid is low, that pathogen might survive digestion.

If your bile isn't flowing, you won't have enough antimicrobial power to neutralize it.

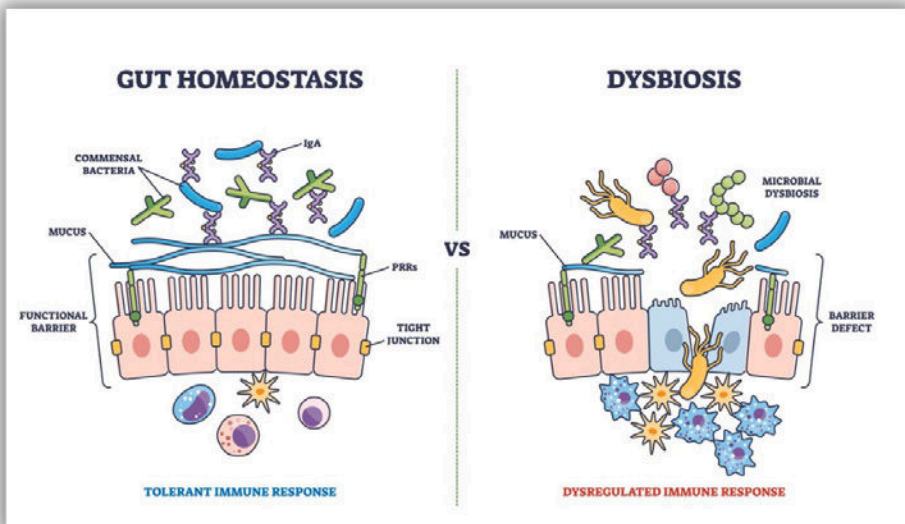
If your motility is sluggish, that microbe might linger and overgrow.

If your immune system is hyperactive or burnt out, it might overreact — or fail to react at all.

This is how gut terrain determines whether a "normal" exposure becomes a chronic issue.

What Happens When Terrain Is Weak:

- Pathogens overgrow or resist treatment
- Food reactions increase (histamine, salicylates, oxalates)
- Fatigue worsens due to immune and liver overload
- Stool tests may show “nothing” — but symptoms persist
- You become more sensitive, not less, after each protocol



What Happens When Terrain Is Strong:

- You eliminate parasites naturally (no protocol needed)
- Inflammation calms down
- You tolerate more foods with ease
- Your bowels become more regular and complete
- You stop needing to chase every symptom

Overview

The 5-Phase Terrain Reset Framework

Before you kill, clear.

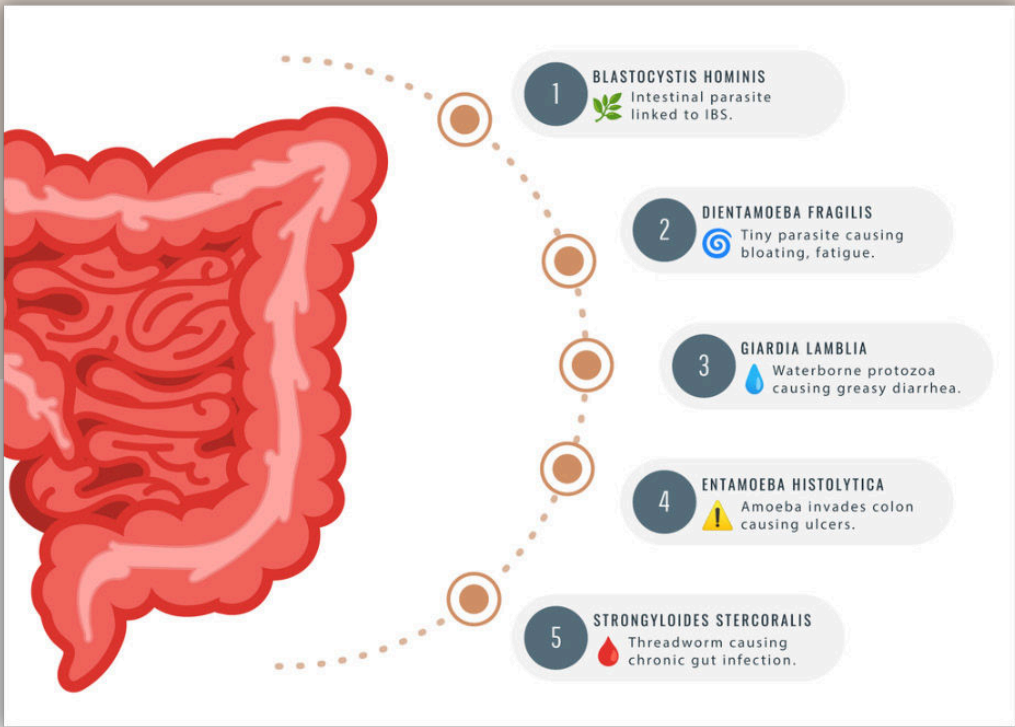
Before you detox, fortify.

Before you treat, prepare the terrain.

This protocol is divided into 5 phases, designed to restore the foundations of digestion, detoxification, and immune regulation — so that when you do address pathogens, your body can respond with strength, not chaos.

Each phase builds on the last, but they can overlap and evolve. You don't need to do one perfectly before moving on. The key is to move intentionally, based on your symptoms and how your body responds.





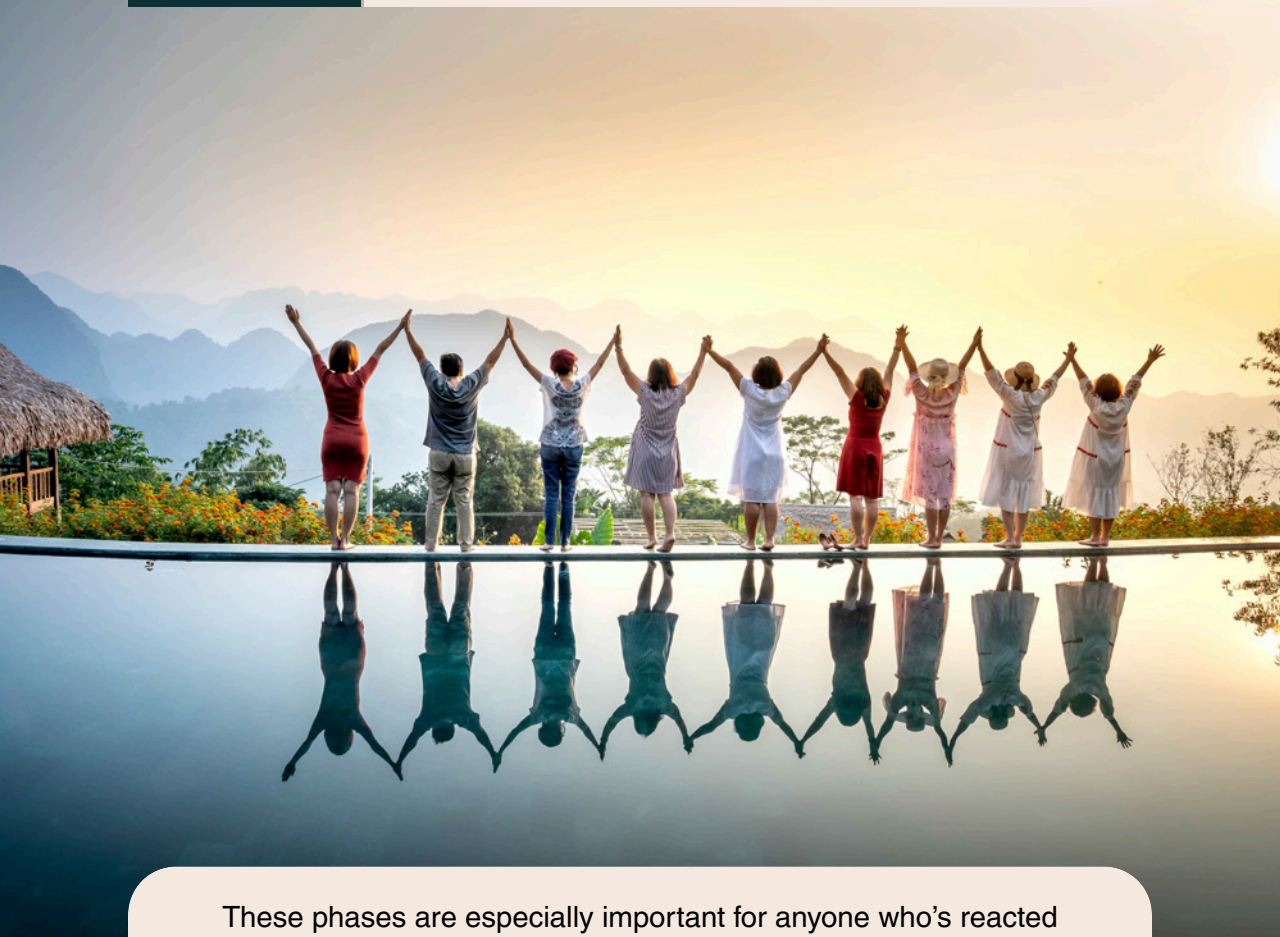
This is why so many SIBO, Candida, or parasite treatments fail long-term — not because the herbs weren't strong enough, but because your body didn't have the support it needed to complete the job.

That's why we reset the terrain first.

In the next section, I'll show you how — using a simple 5-phase framework that works whether you're just starting or you've been stuck for years.

The 5 Phases at a Glance:

Calm	Soothe inflammation and regulate the nervous system
Clear	Open drainage and detox pathways
Prime	Restore digestive “fire” (acid, bile, enzymes)
Strengthen	Rebuild the gut lining and immune terrain
Ready	Prepare for (and tolerate) deeper pathogen-clearing



These phases are especially important for anyone who’s reacted poorly to cleanses, binders, or antimicrobials in the past.

Phase 1

CALM



Goal: *Down-regulate inflammation and restore parasympathetic tone.*

You cannot heal in fight-or-flight. If your body is constantly bracing for the next “bad reaction” — to food, to supplements, to symptoms — your gut terrain will remain locked down and inflamed.

This phase begins to shift your body into a healing state, creating the internal safety needed for repair.

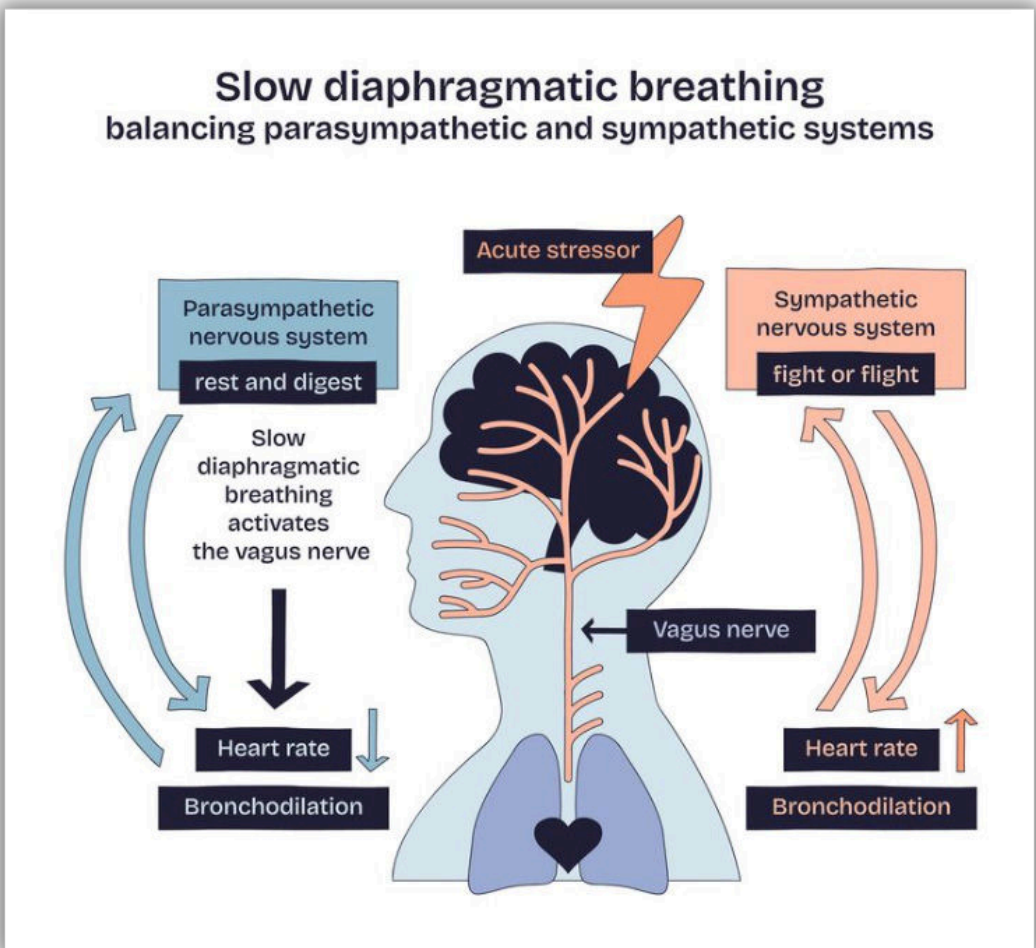
Signs You Need This Phase:

- You react to “everything” — supplements, food, even probiotics
- You have insomnia or racing thoughts
- You startle easily, grind your teeth, or clench your jaw
- Your bloating worsens after stress or arguments
- You experience histamine flares or skin reactions

What To Do:

- Start a 2–3 minute pre-meal vagus routine (deep breathing, humming, parasympathetic oil)
- Sensate device or HRV tracking (if available)
- Increase mineral intake (unrefined salt, trace mineral drops)
- Limit screen time at night (blue light = cortisol)

- Create a short “safety signal” routine before meals or bed (e.g., warm compress, castor oil pack)



Optional Supplements: L-theanine, magnesium glycinate or threonate, GABA/l-theanine blends, Nervine tinctures (like lemon balm, skullcap)

Even just 5% more nervous system regulation can reduce reactivity dramatically — and that’s what opens the door for deeper work.

Phase 2

CLEAR



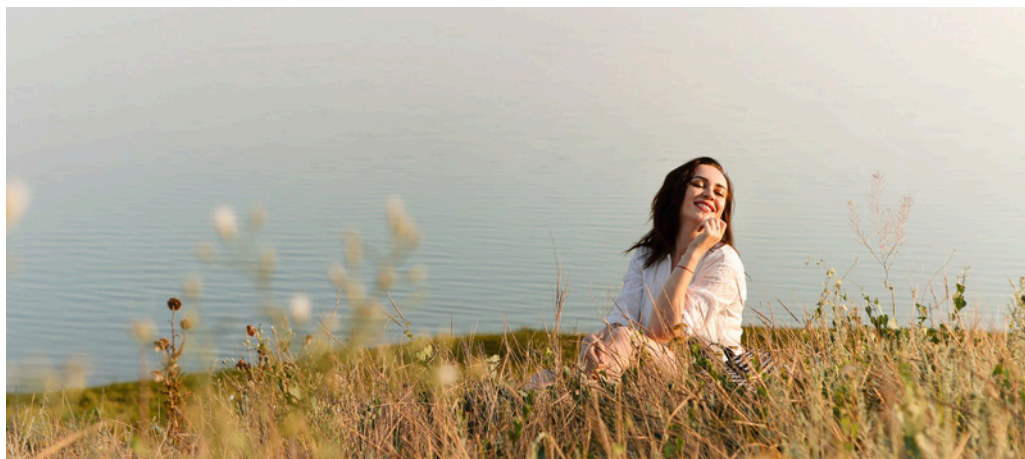
Goal: Open up drainage and detox pathways.

You cannot detox what you cannot drain. If your liver, lymph, or bowels are stagnant, you'll reabsorb what you're trying to eliminate — and feel worse.

This phase focuses on getting waste out of the body gently and regularly.

Signs You Need This Phase:

- Constipation or incomplete bowel movements
- Puffy face, swollen fingers, or abdominal heaviness
- Feeling worse after taking binders, herbs, or antifungals
- Strong reactions to heat, alcohol, or intense exercise
- Waking between 1–3 a.m. (classic liver congestion)





Functional Medicine Shop

Your healing journey deserves products that actually work.

Every supplement mentioned in this guide is hand-selected by me for clinical quality, potency, and purity — the same formulas I use with my private patients and in my own protocols.

You'll find all of them conveniently available through my Functional Medicine Shop, where I've curated only professional-grade supplements that meet the highest standards in functional nutrition.

To make it even easier to get started, enjoy 18% off your entire order with code FMS18 at checkout.



**Want to feel better?
It all starts with drainage
*Get My Favorite Drainage Trio!***

[**Buy Now**](#)

Trying to detox without drainage is like flushing a clogged toilet

If your body's drainage pathways (kidneys, liver, lymph) are backed up, toxins can't move out — they just recirculate.

What To Do:

- Castor oil packs (3–5x/week over liver or abdomen)
- Gentle bitters (1–2 drops of gentian or dandelion root before meals)
- Walk daily or use rebounding / vibration plate for lymph
- Increase fiber and magnesium to support stool quality
- Drink warm lemon water or dandelion tea in the morning



Optional Supports: Binders (activated charcoal, Biotoxin Binder), milk thistle, beet powder, lymphatic drainage tinctures (Cleavers, Red Root)

You may notice subtle changes — better sleep, less puffiness, more consistent bowel movements. That’s terrain shifting in real time.

Phase 3

PRIME



Goal: Reignite digestive fire — acid, bile, and enzymes.

If your digestive secretions are weak, nothing you eat gets broken down properly — and nothing you eat can be cleared. Undigested food = fermentation, bloating, dysbiosis, and food reactivity.

This phase is about restoring the fundamental chemistry of digestion.

Signs You Need This Phase:

- You feel full after a few bites
- You see undigested food in stool
- You have gas, bloating, or reflux after protein or fat
- Your stool floats or has a greasy sheen
- You feel sluggish after meals



What To Do:

- Use digestive bitters or HCl drops before meals (start low)
- Chew each bite 20–30 times — yes, really
- Include bitter greens or lemon water with meals
- Use heat over the liver or gallbladder area before dinner
- Avoid cold smoothies or drinking large amounts during meals



Optional Supports: Betaine HCl (only if tolerated), ox bile (with meals), digestive enzyme blends, taurine or choline for bile thinning

Think of this phase as “restoking the furnace” — without it, the whole terrain runs cold.

Phase 4

STRENGTHEN



Goal: Rebuild the gut lining and immune mucosa.

Once digestion and detox are flowing, we focus on repairing the gut wall itself — the barrier that keeps toxins out, nutrients in, and inflammation in check.

This is essential before reintroductions or deeper pathogen-clearing.

Total Gut Restoration



Signs You Need This Phase:

- Leaky gut, food sensitivity panel lit up
- Skin rashes, eczema, or flushing
- Sinus pressure or postnasal drip
- Recurring bloating or urgency despite good digestion
- You feel like you “absorb nothing” from food or supplements

[Buy Now](#)



What To Do:

- Add targeted mucosal support: L-glutamine, zinc carnosine, immunoglobulins
- Increase collagen-rich foods: bone broth, gelatin, glycine
- Use slippery elm, aloe vera, or marshmallow root teas
- Avoid alcohol and emulsifiers (like polysorbate-80) during this phase
- Add in gentle probiotics (if tolerated): spore-based or soil-based strains



Optional Supports: GI Revive, MegaMucosa, colostrum (if dairy-tolerant), short-chain fatty acids (butyrate)

This is when food tolerance improves and symptoms like histamine sensitivity, post-meal fatigue, or “foggy digestion” begin to lift.

Phase 5

READY



Goal: Assess readiness and support resilience for deeper work.

At this point, your terrain is more resilient — digestion is online, elimination is consistent, inflammation is lower. That means you're finally ready to consider a targeted cleanse or antimicrobial phase — if needed.

Not everyone will need a kill phase. Some feel dramatically better just from terrain repair.

Signs You're Ready:

- Bowel movements are regular and complete
- You're sleeping better and feeling more calm day-to-day
- You've stabilized a 2–3 meal rhythm without major crashes
- You're tolerating core supplements and foods again
- You're no longer reacting to everything

Ask yourself:

- Do I feel more grounded in my body?
- Do I feel curious (not desperate) to go deeper?
- Have I had a stable month of consistent habits?

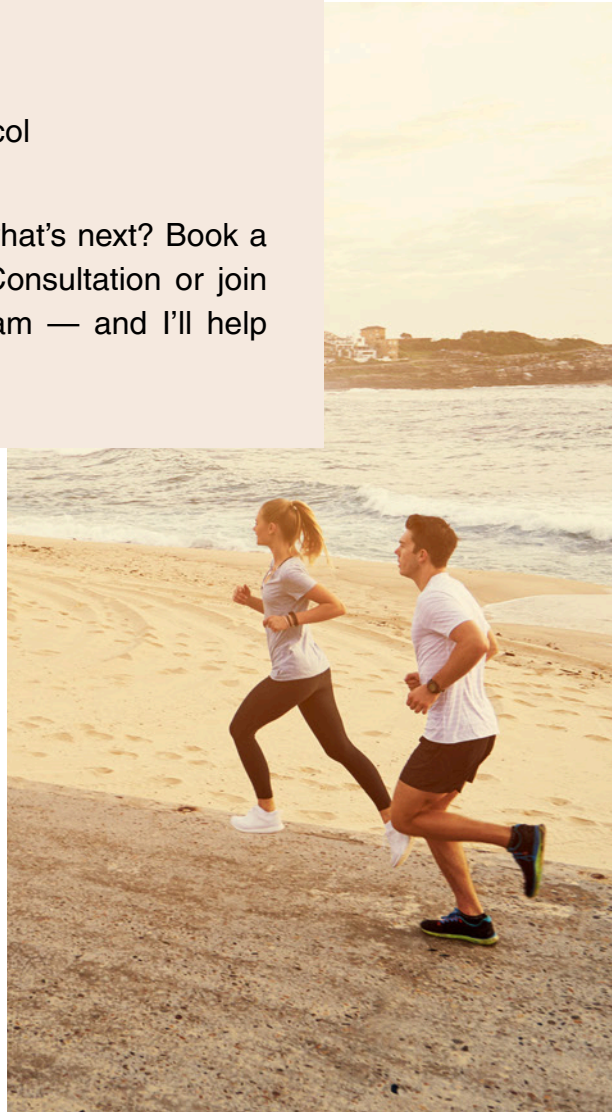
Next Steps (Optional):

Full moon parasite cleanse:

Full Moon Parasite Cleanse

- Mold detox protocol
- Candida reset
- SIBO-targeted protocol

Want support deciding what's next? Book a 20-minute Introductory Consultation or join my 6-week group program — and I'll help you map it out.



Terrain Tracker — How to Know It's Working

The truth is: testing doesn't always reflect progress. But your symptoms do. Use this tracker to monitor your terrain as you move through the 5 phases. You can print it out or fill it in digitally once per week.

Symptom Scoring Key:

- 0 = not an issue
- 1 = mild
- 2 = moderate
- 3 = severe or frequent

SYSTEM	SYMPTOM	Week 1	Week 2	Week 3	Week 4
Stomach Acid	Burping, early fullness				
Bile Flow	Nausea, floating stools, oily stools				
Enzymes	Bloating after meals, undigested food				
Motility	Constipation, sluggish bowels				
Mucosal Immunity	Rashes, sensitivities, histamine flares				
Drainage	Puffy face, headaches, night waking				
Nervous System	Insomnia, clenched jaw, food anxiety				

Tip: If you're feeling "stuck," revisit Phase 1 (CALM) and Phase 2 (CLEAR). They often need more time.

Nutrition That Heals the Terrain

You do not need a perfect diet to heal.

In fact, extreme restriction often keeps the nervous system inflamed and the terrain rigid. Instead, we want to build resilient digestion by working with your body — not against it.

Here are key food strategies to restore terrain function.



Top Priorities:

- Eat 3 solid meals per day (avoid grazing to support motility)
- Chew thoroughly — 20–30 times per bite
- Add bitter greens (arugula, dandelion, endive) to at least one meal
- Include cooked veggies and warm meals — especially early in reset
- Salt to taste with unrefined mineral salt (supports enzymes and bile)
- Support hydration with herbal teas + trace minerals

Common Pitfalls:

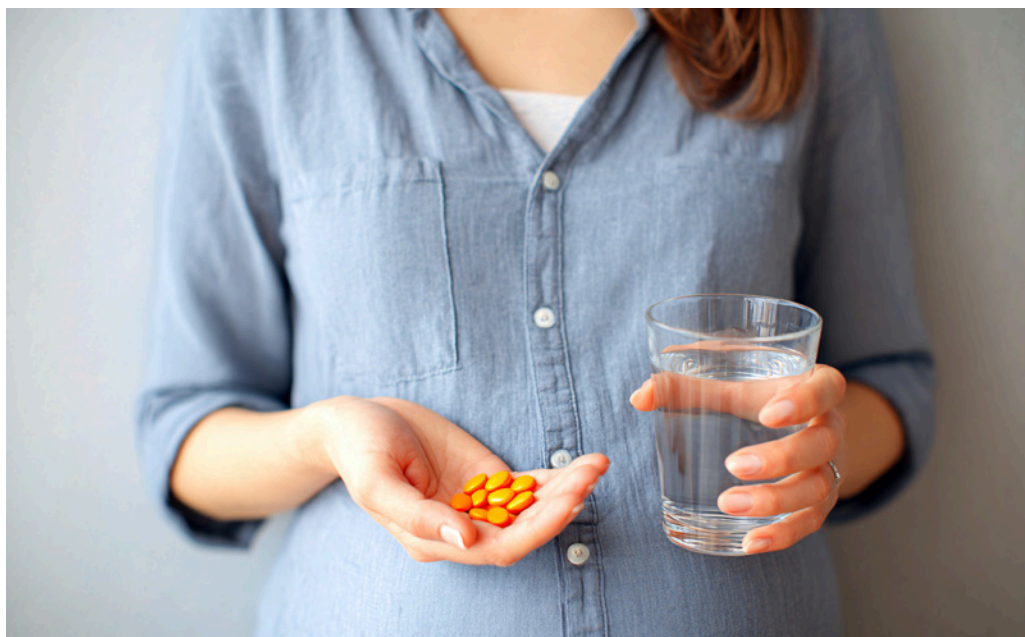
- Too many smoothies (cold, raw = suppress digestive fire)
- Overuse of restrictive diets (makes reintroduction harder later)
- Eating while rushed, anxious, or distracted



Simple 3-Day Soft Terrain Meal Plan:

Day	Breakfast	Lunch	Dinner
01	Scrambled eggs, sautéed spinach	Chicken soup with carrots + rice	Wild salmon, steamed zucchini, quinoa
02	Oats with cinnamon + ground flax	Lentil stew with olive oil drizzle	Ground turkey, roasted beets, arugula
03	Warm bone broth, poached egg	Sardines, sweet potato, bitter greens	Lamb meatballs, mashed parsnip, kale

Rotate proteins, chew slowly, and don't overthink it. Simplicity supports consistency.



Supplement Toolkit for Terrain Support

Supplements are not required — but they can support faster repair when chosen intentionally.

This page breaks down useful tools by category, based on terrain phase and function. All are optional. Use only what feels supportive.

Digestion (Phases 2–3)

- Digestive bitters (Gentian, Dandelion root) – stimulate acid, bile, enzymes
- Digestive enzymes – broad-spectrum blends like Pancreatin or Ox bile
- Betaine HCl – supports acid production (use cautiously and titrate)

Example: Digestive Enzymes by Pure Encapsulations (1 cap with meals)

Bile Flow & Liver Support (Phase 2–3)

- Taurine or choline – promote bile synthesis
- Artichoke leaf, beetroot, dandelion – thin bile and gently stimulate flow
- Castor oil packs – non-supplemental way to support bile drainage

Example: LV-GB Complex (Designs for Health), or Advanced TUDCA, Cellcore



Mucosal Repair (Phase 4)

- L-glutamine – amino acid that feeds gut lining (2–5g/day)
- Marshmallow root, slippery elm, aloe vera – soothe mucosal irritation
- Zinc carnosine, ImmunoLin, colostrum – support immune sealing of gut barrier

Example: MegaMucosa by Microbiome Labs

Nervous System Regulation (Phase 1–All)

- Magnesium glycinate/threonate – calms nervous system, supports motility
- L-theanine, GABA, or nervine herbs – lemon balm, skullcap, passionflower
- Vagus nerve oils or Sensate device – encourage parasympathetic tone

Example: Parasympathetic blend (Vibrant Blue Oils)

Lymph & Drainage (Phase 2+)

- Binders (activated charcoal, humic acid) – absorb waste and byproducts
- Cleavers or Red root tincture – gently move lymphatic fluid
- Hydration + walking – simple but essential

Note: Start binders slowly and away from meds/supplements (2–3x/week to start)

Example: Vi-Rad Binder, Cellcore

Important Reminders:

- More is not better
- Start one thing at a time
- Avoid introducing new supplements during acute flares or illness
- Listen to your body's response, not just the label





Advanced Considerations — Terrain Blockers & When to Pause

Once you've begun supporting your terrain, it's important to identify obstacles that could be slowing your progress — or signaling that it's time to pause and reassess.

Common Terrain Blockers:

- **Mold exposure:** If you're living in an active mold environment (confirmed or suspected), terrain work may stall. Mold suppresses the immune system, thins the mucosal lining, and stresses the nervous system.
- **Ongoing emotional or physical stress:** Trauma, divorce, grief, caregiving, or burnout can lock your system in sympathetic overdrive. It's okay to focus on nervous system work longer before layering in supplements or deeper phases.
- **Over-supplementation:** If you're already taking 10+ gut supplements, more may not be better. Reduce inputs, simplify, and return to Phase 1 or 2.
- **Poor sleep:** Your body cannot repair the gut lining without adequate rest. If you're not sleeping through the night, focus here first.

When to Pause or Go Back:

You may feel tempted to rush forward once you see improvement — but healing is not linear. You may need to revisit earlier phases if:

- You feel more reactive after adding in new supplements
- Your bowel movements slow down again
- Sleep or food tolerance regresses
- A new life stressor emerges

That's okay. Each loop builds more resilience.

This is healing in real time — not a failure.

Terrain Reset Recap — Quick Reference Chart

Phase	Focus	When to Stay Longer
CALM	Nervous system, inflammation	If reactive to supplements, anxious, poor sleep
CLEAR	Drainage + elimination	If constipated, puffy, toxic-feeling, headachy
PRIME	Stomach acid, bile, enzymes	If bloated after meals, full quickly, greasy stool
STRENGTHEN	Gut lining + mucosa	If histamine flares, food reactions, skin issues
READY	Resilience + deeper clearing	If symptoms are mild, digestion stable, ready to go deeper

You can revisit this chart as needed — healing is cyclical, not linear.



What to Do When You're Ready to Go Deeper

You've now done something many people skip — you've prepared your terrain. If your symptoms are improving but not fully resolved, this may be the time to consider:

- A parasite cleanse (especially if cyclical symptoms remain)
- A candida or fungal reset (especially if there's mold history, sugar cravings, rashes)
- A deeper SIBO protocol (if upper GI bloat, reflux, or gas remain persistent)
- Trauma or vagal reset work (especially if symptoms worsen under stress)

Not sure which one is right? That's what my programs and consults are for.

Your Next Options:

Book a 20-Min Intro Consultation to map your root cause priorities

[Schedule a Meet and Greet HERE](#)

Join the 6-Week REVIVE to THRIVE Group Program

[Click Here](#)

THE REAL TRUTH? YOU DON'T NEED ANOTHER SIBO PROTOCOL

You need a new perspective.

Your gut is more than just bacteria.

It's your immune system. Your hormones. Your nervous system.

It's your story.

If no one has slowed down to *listen to that story* — and help you see the whole picture — no wonder you feel stuck.

But it doesn't have to stay that way.



Final Words —

From My Practice to Your Healing

If you've made it here, I want to acknowledge something:

You've already done the hardest part.

You've stopped searching for another "kill protocol." You've paused to rebuild instead of rush to remove. That is a courageous choice in a wellness world that often skips this step.

Your body is not broken.

It just hasn't been supported in the right sequence.

Whether you go on to clear parasites, address mold, or heal your hormones — this work will support you at every layer. It's the foundation under the protocol.

And when your terrain is strong...
You don't just feel better.
You stay better.

With warmth and respect,

Angela Pifer

Angela Pifer, FMN, LN, CN "SIBO Guru"
Founder, Functional Medicine Shop
Follow Me @SIBO.guru
www.SIBOGuru.com
www.FunctionalMedicineShop.com



Next Steps

LET'S GET TO THE ROOT TOGETHER

You're not broken. You're not crazy. And you're not alone.

There's a root cause behind your symptoms — and we're here to help you find it.

[Schedule a Meet and Greet HERE](#)

Follow me [@SIBO.guru](#)

Work with Angela:



[Schedule a Meet and Greet HERE](#)